

Aircraft Service International, Inc.

18740 & 18750 Fill Stand Road
SeaTac, WA 98158

Tenant Lease Information

Property	Total Parcel Size	Expiration Date	Lease Terms
Lease #	Square Footage		
#000033	29,500 sq. ft.	Indefinite	Month-to Month

Tenant General Information

Current Use:	Fueling Site Ground Lease
Location:	South-end of Airfield (Inside the Fence)
City:	SeaTac

King County Parcel #'s

#2823049016

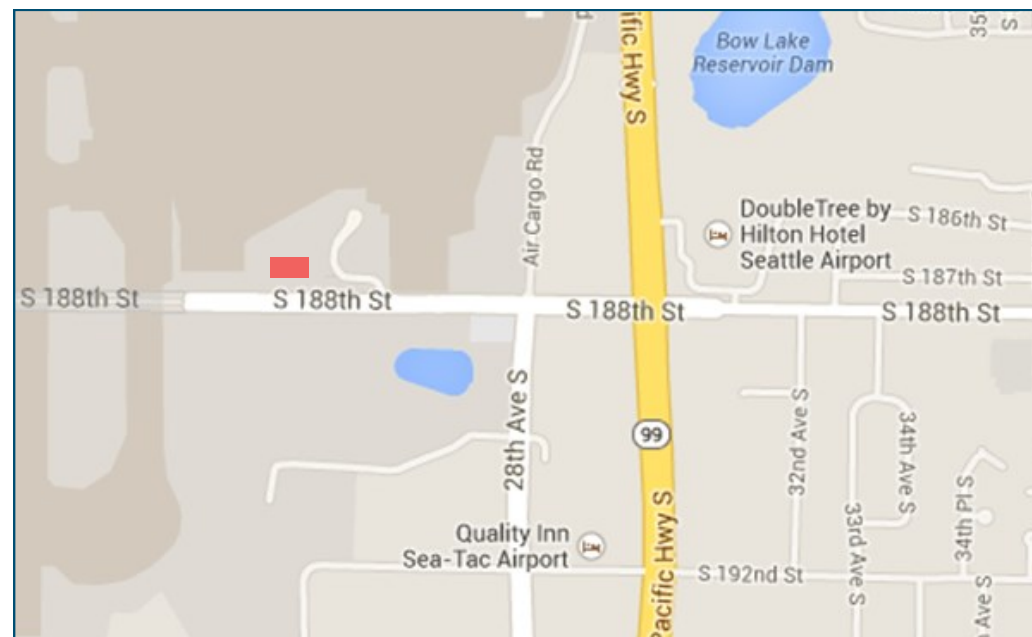
Tenant Company Building Information

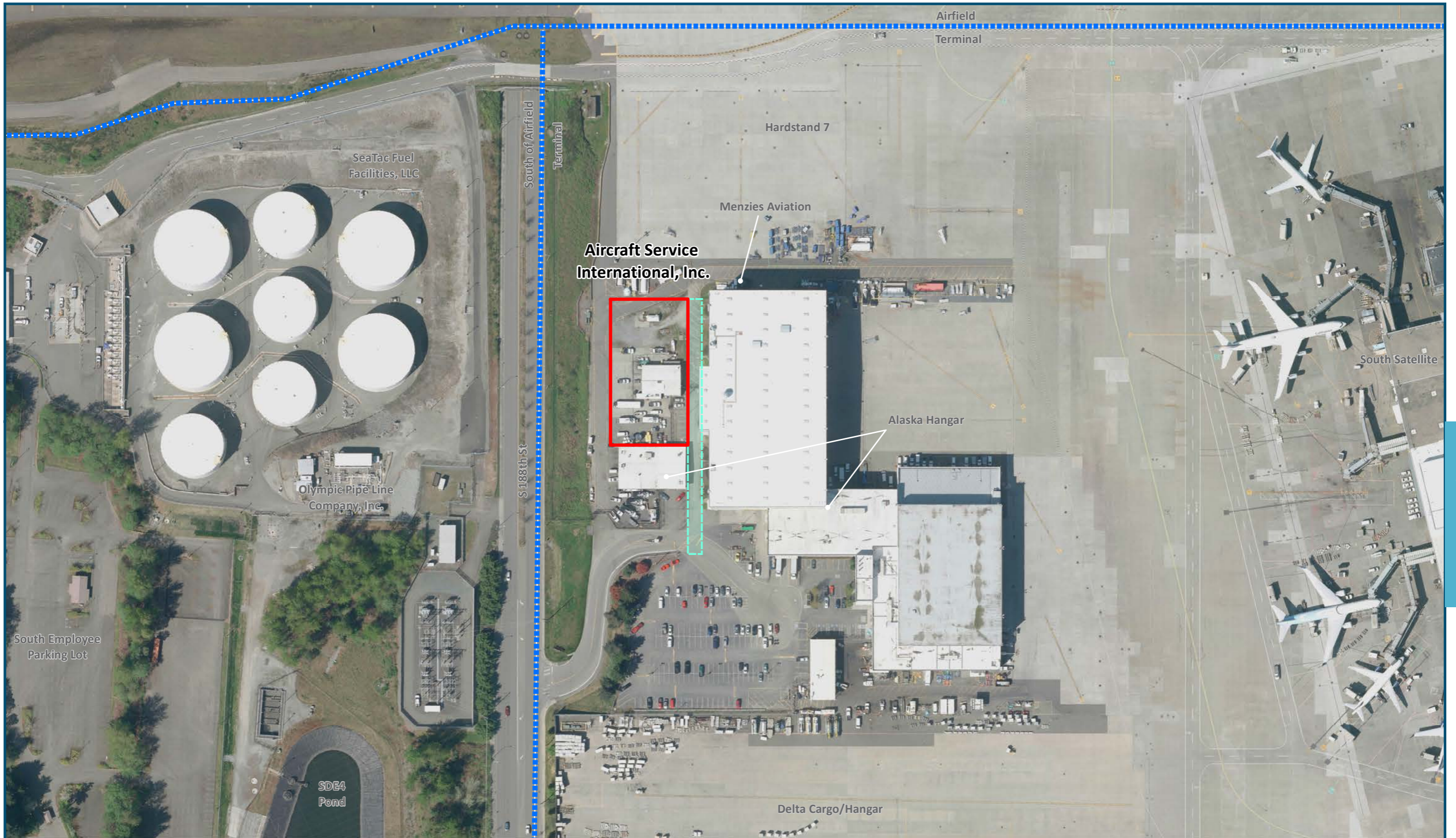
Building ID Code/ Common Name	Function	Building Owned By	Approximate Total		
			Foot Print Sq. ft.	Office Sq. ft.	Whse. Sq. ft.
	Fueling Site	Port of Seattle	1,848		

Restrictions of Use—Based on Funding

Bonds	Airport Improvement Project Fund (AIP)
Please Call for Details	Please Call for Details

Before modifying use of property assess bonds restrictions by contacting Corporate Finance & Budget.
Access AIP's by contacting Airport Finance & Budget.



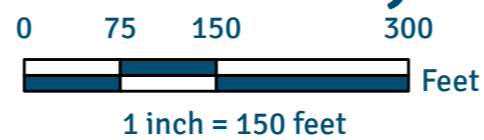


Aircraft Service International, Inc.

Lease #000033

Date Published: 12-31-2014

Disclaimer: This map is for general reference only. Data Layers that appear on this map may or may not be accurate, current, or otherwise reliable. THIS MAP IS NOT TO BE USED FOR NAVIGATION.



- - - - - Zone Matchline Boundary
- Port of Seattle Lease Boundary
- - - - - Easement

Aerial Photo Taken Spring 2012